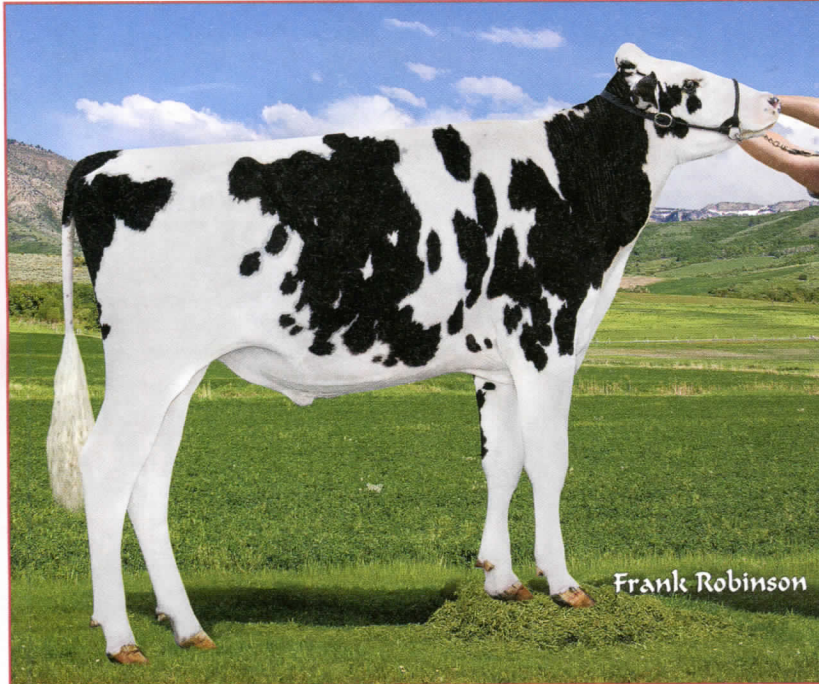


A NEW SOURCE OF R & W GENETICS

For The True Breeding Connoisseur



ESKDALE

Mister-ET *RC

+2302G +903M +22F +32P -.04%F +.02%P +374\$NM
2.4PL -.1DPR +3.44T +2.73UDC +2.27FLC 4/2016

***An exciting young sire born
3-03-2015***

aAa 423615. Where can you find a RC sire +900M with good health traits and +3.44PTAT? Mister is a Kingboy from Lady pictured below. The family has All-American heritage, Mister's 4 nearest dams are EX and average over 92 pts, combined with proven bull power. We have semen available. \$10/unit with volume discounts over 50 straws ordered.

Frank Robinson



ESKDALE

Destry Lady-ET (EX-91 EEEVE 5Y)

+2023GTPI +2.93T +2.62UDC +2.13 FLC 4/2016
3-07 2 360 32,370 3.8 1244 3.4 1093

***Fresh at 4-09 and making an
even bigger record***

A Destry from **Ms EskDale Doozy-Red-ET (EX-91)**, next dam **Dyks Advent Lucy-Red-ET (EX-93)** All-Utah and All-Idaho; nominated All American 2y, then **Double-G Rubens Lindsay (EX-94)**. Lucy's maternal sister by Kite, **Dyks Kite Linda-Red-ET (EX-95)** and All-American. Doozy's Durable son, **EskDale Magenta-Red-ET, GTPI +2064** 4th highest among daughter-proven Red bulls. Lady has more points in her and is developing into a truly dynamic brood cow.

Frank Robinson

EskDale Dairy

"Rivers of milk in the desert"

1100 Circle Drive, EskDale, UT 84728 | 435-855-2144

John M. Conrad 435-209-0002 | Ben J. Conrad 435-209-0224 | Ron Eldridge 432-979-2028 | Barn 435-855-2144

Email eskdaledairy@hotmail.com | Website www.eskdaledairy.com